

Willis Point Rd between Wallace Dr and Municipal boundard

February 24, 2020 To February 28, 2020



The data presented here is for information purposes only and should not be considered authoritative for construction, geotechnical, engineering, navigational, legal, or other site-specific uses. The information shared is owned by the Transportation Division of the Engineering Department at the District of Saanich. Accuracy is not guaranteed.

Start Date: 24-Feb-20
 Start Time: 0:06
 Station ID: M0042-01

Location 1: Willis Point Rd between Wallace Dr and Municipal boundard

Note:

DATE:	February 24, 2020		February 25, 2020		February 26, 2020		February 27, 2020		February 28, 2020		WK AVG		WK AVG	HOURLY
	MON		TUE		WED		THURS		FRI		EB	WB	CH 1+2	%
Time:	EB	WB	EB	WB	EB	WB	EB	WB	EB	WB	EB	WB		
12-1 AM	2	1	0	4	1	4	5	6			2	4	6	0.3%
1-2 AM	0	2	1	2	0	1	0	1			0	2	2	0.1%
2-3 AM	1	0	4	0	2	3	1	0			2	1	3	0.1%
3-4 AM	2	1	1	1	1	0	2	1			2	1	2	0.1%
4-5 AM	2	0	0	1	4	3	1	0			2	1	3	0.1%
5-6 AM	8	5	11	6	10	5	9	6			10	6	15	0.8%
6-7 AM	36	69	36	82	43	74	35	73			38	75	112	5.6%
7-8 AM	139	34	150	48	138	48	143	37			143	42	184	9.3%
8-9 AM	114	38	139	30	141	35	116	34			128	34	162	8.2%
9-10 AM	71	42	68	44	62	46	67	54			67	47	114	5.7%
10-11 AM	48	54	45	46	63	50	77	46			58	49	107	5.4%
11-12 PM	81	62	51	57	72	56	68	38			68	53	121	6.1%
12-1 PM	57	67	73	46	70	68	71	55			68	59	127	6.4%
1-2 PM	64	62	66	71	69	84	57	77			64	74	138	6.9%
2-3 PM	61	55	59	74	61	77	38	55			55	65	120	6.0%
3-4 PM	70	104	74	102	80	120	60	99			71	106	177	8.9%
4-5 PM	69	129	53	138	84	161	54	132			65	140	205	10.3%
5-6 PM	72	97	84	85	111	122	95	97			91	100	191	9.6%
6-7 PM	23	34	36	37	24	42	24	50			27	41	68	3.4%
7-8 PM	12	21	8	27	16	31	13	23			12	26	38	1.9%
8-9 PM	8	20	11	17	16	18	12	18			12	18	30	1.5%
9-10 PM	9	27	10	17	10	17	8	24			9	21	31	1.5%
10-11 PM	2	7	3	24	9	19	10	17			6	17	23	1.1%
11-12 AM	3	2	7	3	3	5	4	4			4	4	8	0.4%
LANES	954	933	990	962	1090	1089	970	947			1001	983	1984	100.0%
TOTAL	1887		1952		2179		1917				1990			
	MON		TUE		WED		THURS		FRI		WK AVG			

PEAK HOUR					TOTAL VEHICALS-PEAK PERIODS		2 HOUR PEAK INTERVALS			
MAX. 7 - 9 am PEAK HOUR	184	⇒	9.3%	between 7-8 AM	990	⇒ 6 HR TOTAL	2 HR AM (7 - 9 AM)			
MAX. 7 - 11 am PEAK HOUR	184	⇒	9.3%	between 7-8 AM	742	⇒ 4 HR TOTAL	VEH / HR	VEH / 2HR	2 HR %	
							7-8 AM	184	346	17.4%
							8-9 AM	162		
MAX. 11 am - 1 pm PEAK HOUR	127	⇒	6.4%	between 12-1 PM	2 HR NOON (11 - 1 PM)					
MAX. 11 am - 3 pm PEAK HOUR	138	⇒	6.9%	between 1-2 PM	VEH / HR VEH / 2HR 2 HR %					
							11-12 PM	121	248	12.5%
							12-1 PM	127		
MAX. 4 - 6 pm PEAK HOUR	205	⇒	10.3%	between 4-5 PM	2 HR PM (4 - 6 PM)					
MAX. 3 - 6 pm PEAK HOUR	205	⇒	10.3%	between 4-5 PM	VEH / HR VEH / 2HR 2 HR %					
							4-5 PM	205	396	19.9%
							5-6 PM	191		

Willis Point Rd between Wallace Dr and Municipal boundard

Westbound

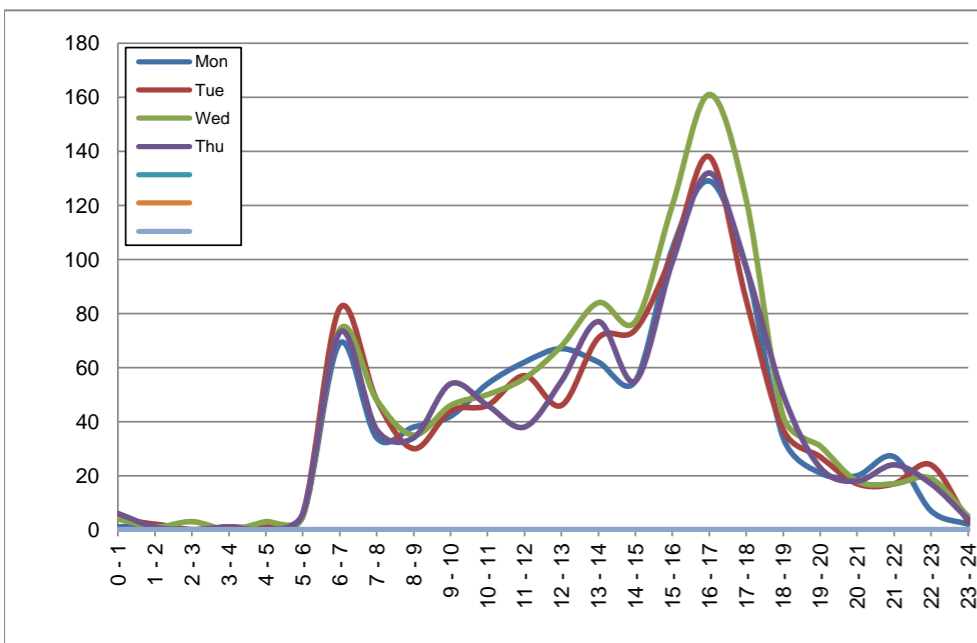
February 24, 2020 to February 27, 2020

Hourly Volumes

Time Period	Mon	Tue	Wed	Thu			
	Feb 24	Feb 25	Feb 26	Feb 27			
0 - 1	1	4	4	6			
1 - 2	2	2	1	1			
2 - 3	0	0	3	0			
3 - 4	1	1	0	1			
4 - 5	0	1	3	0			
5 - 6	5	6	5	6			
6 - 7	69	82	74	73			
7 - 8	34	48	48	37			
8 - 9	38	30	35	34			
9 - 10	42	44	46	54			
10 - 11	54	46	50	46			
11 - 12	62	57	56	38			
12 - 13	67	46	68	55			
13 - 14	62	71	84	77			
14 - 15	55	74	77	55			
15 - 16	104	102	120	99			
16 - 17	129	138	161	132			
17 - 18	97	85	122	97			
18 - 19	34	37	42	50			
19 - 20	21	27	31	23			
20 - 21	20	17	18	18			
21 - 22	27	17	17	24			
22 - 23	7	24	19	17			
23 - 24	2	3	5	4			
Day Total	933	962	1089	947			

15-Minute Volumes

Time Start	Mon	Tue	Wed	Thu				Time Start	Mon	Tue	Wed	Thu			
	Feb 24	Feb 25	Feb 26	Feb 27					Feb 24	Feb 25	Feb 26	Feb 27			
0:00	1	1	0	1				12:00	17	9	10	13			
0:15	0	0	2	2				12:15	14	8	19	17			
0:30	0	3	2	2				12:30	17	11	16	12			
0:45	0	0	0	1				12:45	19	18	23	13			
1:00	2	0	0	0				13:00	16	21	20	15			
1:15	0	1	1	1				13:15	12	15	18	15			
1:30	0	0	0	0				13:30	17	19	24	24			
1:45	0	1	0	0				13:45	17	16	22	23			
2:00	0	0	0	0				14:00	13	20	20	9			
2:15	0	0	0	0				14:15	11	18	19	12			
2:30	0	0	2	0				14:30	12	13	16	19			
2:45	0	0	1	0				14:45	19	23	22	15			
3:00	0	0	0	0				15:00	26	19	28	19			
3:15	0	1	0	1				15:15	30	26	26	26			
3:30	0	0	0	0				15:30	19	23	32	31			
3:45	1	0	0	0				15:45	29	34	34	23			
4:00	0	0	0	0				16:00	31	37	43	22			
4:15	0	1	0	0				16:15	25	35	41	31			
4:30	0	0	1	0				16:30	33	37	33	36			
4:45	0	0	2	0				16:45	40	29	44	43			
5:00	0	1	0	1				17:00	34	28	40	35			
5:15	0	2	0	1				17:15	30	29	42	29			
5:30	2	1	2	0				17:30	19	15	17	17			
5:45	3	2	3	4				17:45	14	13	23	16			
6:00	8	13	12	6				18:00	14	17	15	17			
6:15	22	21	15	23				18:15	8	9	11	10			
6:30	25	27	34	26				18:30	9	2	7	10			
6:45	14	21	13	18				18:45	3	9	9	13			
7:00	8	9	13	18				19:00	8	9	10	5			
7:15	13	16	14	3				19:15	7	11	5	9			
7:30	10	15	14	7				19:30	4	5	9	2			
7:45	3	8	7	9				19:45	2	2	7	7			
8:00	8	9	8	3				20:00	6	7	2	5			
8:15	8	8	7	10				20:15	3	1	5	5			
8:30	11	5	10	11				20:30	3	5	6	5			
8:45	11	8	10	10				20:45	8	4	5	3			
9:00	9	8	11	14				21:00	6	6	4	6			
9:15	17	13	8	10				21:15	8	2	3	8			
9:30	9	7	12	18				21:30	6	6	10	5			
9:45	7	16	15	12				21:45	7	3	0	5			
10:00	10	8	14	16				22:00	1	6	9	4			
10:15	15	13	13	14				22:15	3	13	5	7			
10:30	15	13	16	11				22:30	2	2	4	4			
10:45	14	12	7	5				22:45	1	3	1	2			
11:00	12	11	11	9				23:00	0	1	1	0			
11:15	12	14	17	9				23:15	2	1	2	3			
11:30	20	15	14	12				23:30	0	1	1	1			
11:45	18	17	14	8				23:45	0	0	1	0			



Site notes:

Willis Point Rd between Wallace Dr and Municipal boundard

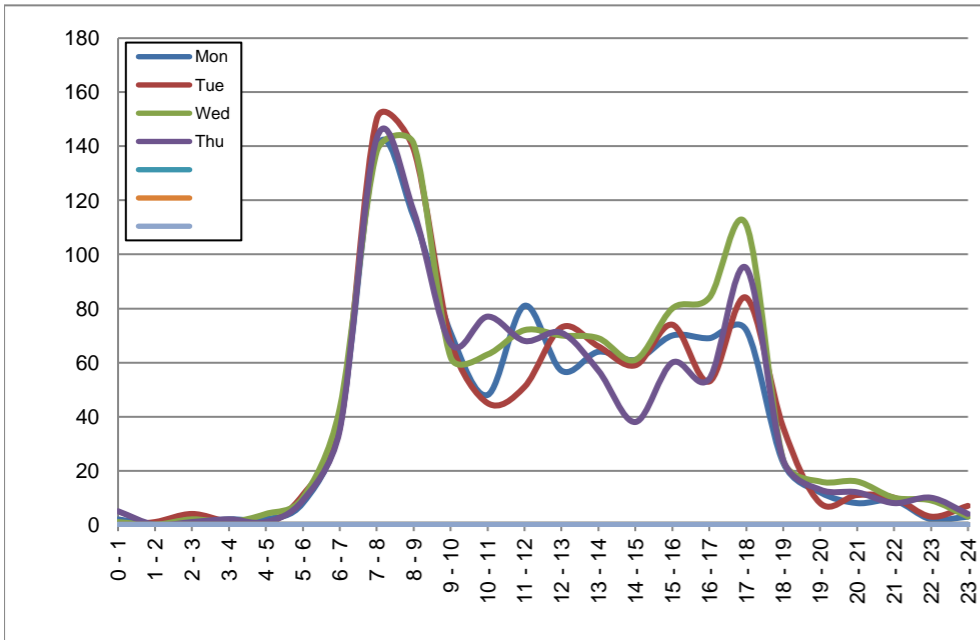
Eastbound
February 24, 2020 to February 27, 2020

Hourly Volumes

Time Period	Mon	Tue	Wed	Thu			
	Feb 24	Feb 25	Feb 26	Feb 27			
0 - 1	2	0	1	5			
1 - 2	0	1	0	0			
2 - 3	1	4	2	1			
3 - 4	2	1	1	2			
4 - 5	2	0	4	1			
5 - 6	8	11	10	9			
6 - 7	36	36	43	35			
7 - 8	139	150	138	143			
8 - 9	114	139	141	116			
9 - 10	71	68	62	67			
10 - 11	48	45	63	77			
11 - 12	81	51	72	68			
12 - 13	57	73	70	71			
13 - 14	64	66	69	57			
14 - 15	61	59	61	38			
15 - 16	70	74	80	60			
16 - 17	69	53	84	54			
17 - 18	72	84	111	95			
18 - 19	23	36	24	24			
19 - 20	12	8	16	13			
20 - 21	8	11	16	12			
21 - 22	9	10	10	8			
22 - 23	2	3	9	10			
23 - 24	3	7	3	4			
Day Total	954	990	1090	970			

15-Minute Volumes

Time Start	Mon	Tue	Wed	Thu				Time Start	Mon	Tue	Wed	Thu			
	Feb 24	Feb 25	Feb 26	Feb 27					Feb 24	Feb 25	Feb 26	Feb 27			
0:00	0	0	0	1				12:00	21	15	13	13			
0:15	2	0	0	1				12:15	14	18	15	20			
0:30	0	0	0	1				12:30	12	28	22	15			
0:45	0	0	1	2				12:45	10	12	20	23			
1:00	0	1	0	0				13:00	17	18	19	20			
1:15	0	0	0	0				13:15	17	23	15	9			
1:30	0	0	0	0				13:30	17	13	16	14			
1:45	0	0	0	0				13:45	13	12	19	14			
2:00	0	0	0	0				14:00	22	17	17	5			
2:15	0	2	1	0				14:15	15	14	16	14			
2:30	1	1	1	1				14:30	18	13	15	10			
2:45	0	1	0	0				14:45	6	15	13	9			
3:00	0	0	0	0				15:00	12	18	19	18			
3:15	0	0	0	0				15:15	15	14	20	11			
3:30	2	1	1	2				15:30	26	20	28	19			
3:45	0	0	0	0				15:45	17	22	13	12			
4:00	0	0	1	0				16:00	22	13	24	16			
4:15	1	0	1	0				16:15	19	14	20	11			
4:30	0	0	1	0				16:30	18	10	23	15			
4:45	1	0	1	1				16:45	10	16	17	12			
5:00	1	3	1	0				17:00	14	14	24	23			
5:15	1	1	1	0				17:15	19	17	23	15			
5:30	4	4	5	6				17:30	21	28	29	36			
5:45	2	3	3	3				17:45	18	25	35	21			
6:00	3	4	6	5				18:00	7	12	7	7			
6:15	3	4	4	4				18:15	6	10	8	8			
6:30	13	8	12	8				18:30	4	8	4	4			
6:45	17	20	21	18				18:45	6	6	5	5			
7:00	18	26	28	24				19:00	3	4	6	5			
7:15	37	29	34	37				19:15	4	1	5	3			
7:30	30	55	39	31				19:30	1	2	3	2			
7:45	54	40	37	51				19:45	4	1	2	3			
8:00	42	45	49	36				20:00	3	2	3	2			
8:15	23	37	34	34				20:15	2	5	4	3			
8:30	31	26	36	27				20:30	3	3	5	3			
8:45	18	31	22	19				20:45	0	1	4	4			
9:00	14	20	12	18				21:00	2	2	4	0			
9:15	16	9	17	13				21:15	5	3	2	3			
9:30	20	15	15	17				21:30	0	3	3	2			
9:45	21	24	18	19				21:45	2	2	1	3			
10:00	9	13	25	23				22:00	1	2	4	3			
10:15	19	9	12	22				22:15	1	0	2	4			
10:30	8	14	17	20				22:30	0	1	3	0			
10:45	12	9	9	12				22:45	0	0	0	3			
11:00	27	12	25	15				23:00	0	3	1	1			
11:15	20	17	18	22				23:15	3	1	2	1			
11:30	18	10	19	16				23:30	0	3	0	2			
11:45	16	12	10	15				23:45	0	0	0	0			



Site notes:

Vehicle Speed Summary

Saanich Engineering Department

Count Id: M0042-01

Filename: Willis Point Rd between Wallace Dr and Municipal boundard-Feb-2020.xlsm

Location: Willis Point Rd between Wallace Dr and Municipal boundard

Note:

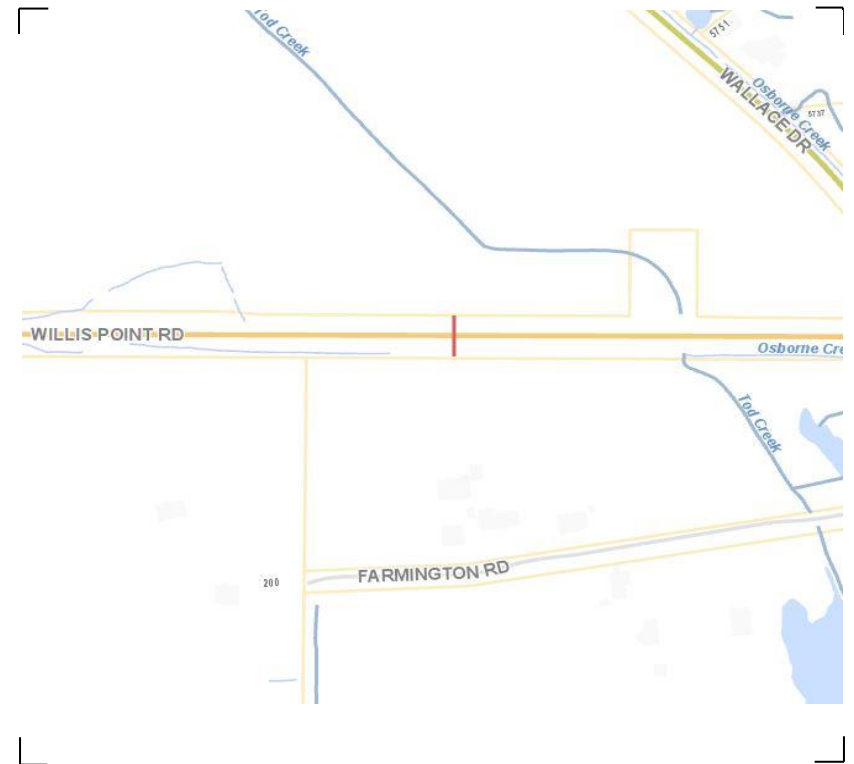
Direction: **East-West**

Dates: **February 24, 2020 To February 28, 2020**

Filtered data

AVG. SPEED	44 mph	71 km/h
50 % SPEED	44 mph	71 km/h
85 % SPEED	52 mph	83 km/h
95 % SPEED	57 mph	92 km/h

Location Map



Willis Point Rd between Wallace Dr and Municipal boundard

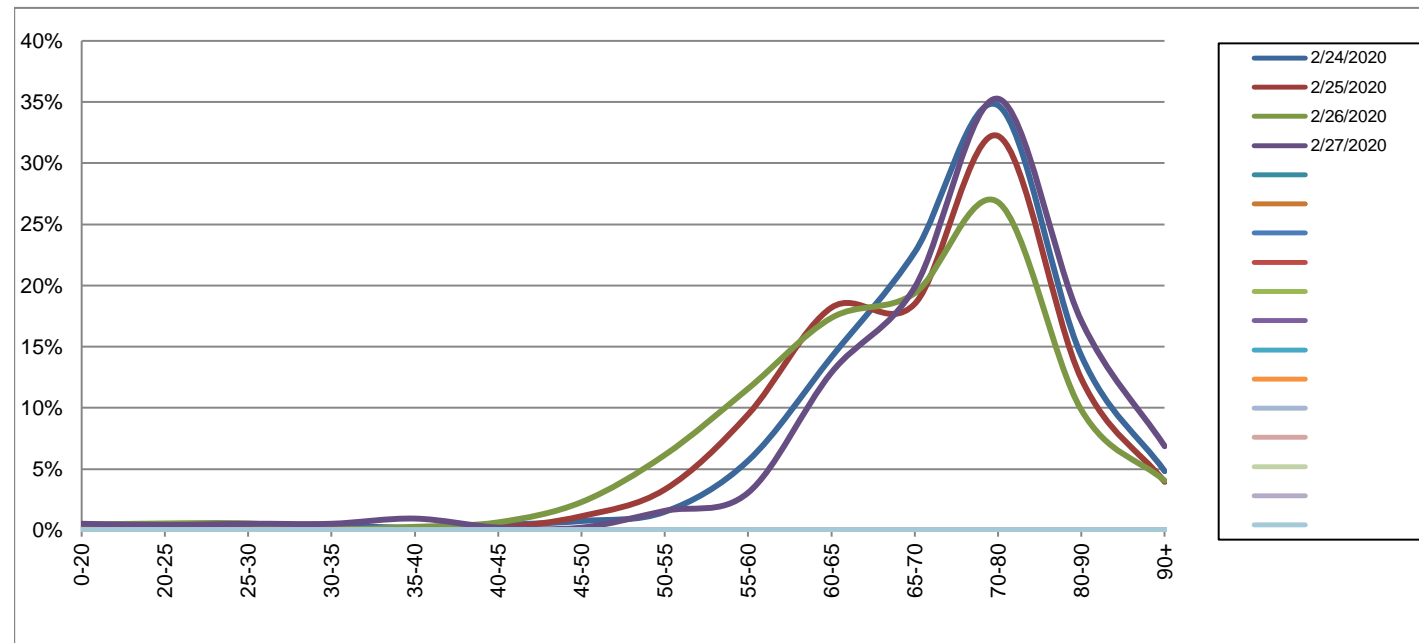
Westbound

February 24, 2020 to February 27, 2020

Daily Speed Bin Percentages														Daily Speed Bin Volumes														Total	Avg.	
Bin #	1	2	3	4	5	6	7	8	9	10	11	12	13	14	1	2	3	4	5	6	7	8	9	10	11	12	13	14	Volume	Speed
Bin Speeds	0-20	20-25	25-30	30-35	35-40	40-45	45-50	50-55	55-60	60-65	65-70	70-80	80-90	90+	0-20	20-25	25-30	30-35	35-40	40-45	45-50	50-55	55-60	60-65	65-70	70-80	80-90	90+		
2/24/2020	0.1%	0.3%	0.0%	0.3%	0.2%	0.4%	0.8%	1.5%	5.7%	14.1%	22.7%	34.7%	14.3%	4.8%	1	3	0	3	2	4	7	14	53	132	212	324	133	45	933	72
2/25/2020	0.2%	0.1%	0.1%	0.1%	0.1%	0.2%	1.1%	3.3%	9.5%	18.2%	18.5%	32.2%	12.4%	4.0%	2	1	1	1	1	2	11	32	91	175	178	310	119	38	962	70
2/26/2020	0.5%	0.6%	0.6%	0.1%	0.3%	0.6%	2.3%	6.2%	11.6%	17.4%	19.4%	26.8%	9.8%	4.0%	5	6	6	1	3	7	25	67	126	189	211	292	107	44	1089	68
2/27/2020	0.5%	0.4%	0.5%	0.5%	1.0%	0.2%	0.2%	1.6%	3.1%	12.9%	19.9%	35.3%	17.1%	6.9%	5	4	5	5	9	2	2	15	29	122	188	334	162	65	947	73
Total	0.3%	0.4%	0.3%	0.3%	0.4%	0.4%	1.1%	3.3%	7.6%	15.7%	20.1%	32.1%	13.3%	4.9%	13	14	12	10	15	15	45	128	299	618	789	1260	521	192	3931	71

Speed Data Summary

Bin #	1	2	3	4	5	6	7	8	9	10	11	12	13	14	Total
Bin Speeds	0-20	20-25	25-30	30-35	35-40	40-45	45-50	50-55	55-60	60-65	65-70	70-80	80-90	90+	
Survey Total	13	14	12	10	15	15	45	128	299	618	789	1260	521	192	3931
% Total	0.3%	0.4%	0.3%	0.3%	0.4%	0.4%	1.1%	3.3%	7.6%	15.7%	20.1%	32.1%	13.3%	4.9%	100%
Accumulated %	0.3%	0.7%	1.0%	1.2%	1.6%	2.0%	3.2%	6.4%	14.0%	29.7%	49.8%	81.9%	95.1%	100%	
Inverse Accum. %	99.7%	99.3%	99.0%	98.8%	98.4%	98.0%	96.8%	93.6%	86.0%	70.3%	50.2%	18.1%	4.9%	0.0%	
Average Speed	71 KM/H														



Site notes:

Willis Point Rd between Wallace Dr and Municipal boundard

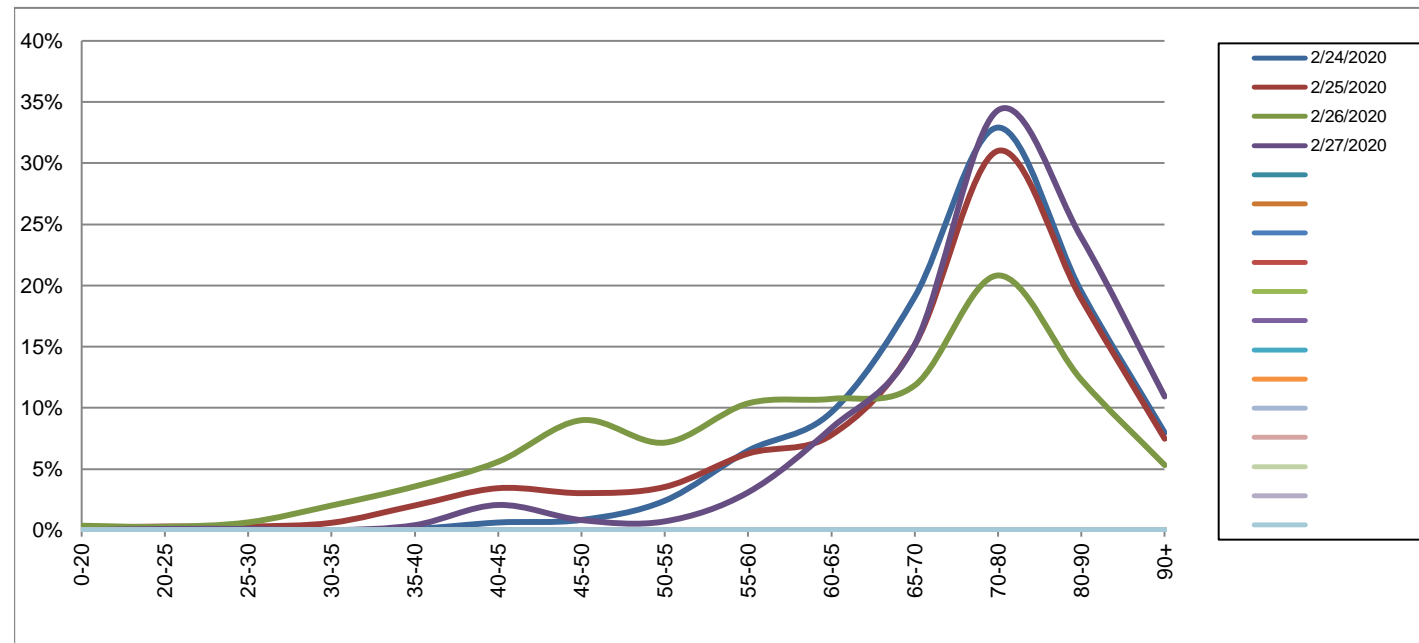
Eastbound

February 24, 2020 to February 27, 2020

Daily Speed Bin Percentages														Daily Speed Bin Volumes														Total	Avg.	
Bin #	1	2	3	4	5	6	7	8	9	10	11	12	13	14	1	2	3	4	5	6	7	8	9	10	11	12	13	14	Volume	Speed
Bin Speeds	0-20	20-25	25-30	30-35	35-40	40-45	45-50	50-55	55-60	60-65	65-70	70-80	80-90	90+	0-20	20-25	25-30	30-35	35-40	40-45	45-50	50-55	55-60	60-65	65-70	70-80	80-90	90+		
2/24/2020	0.3%	0.0%	0.1%	0.0%	0.1%	0.6%	0.8%	2.4%	6.5%	9.6%	19.1%	32.9%	19.5%	8.0%	3	0	1	0	1	6	8	23	62	92	182	314	186	76	954	74
2/25/2020	0.2%	0.3%	0.3%	0.6%	2.0%	3.4%	3.0%	3.5%	6.3%	7.8%	15.2%	31.0%	18.9%	7.5%	2	3	3	6	20	34	30	35	62	77	150	307	187	74	990	71
2/26/2020	0.4%	0.3%	0.6%	2.0%	3.6%	5.6%	9.0%	7.2%	10.4%	10.7%	11.8%	20.8%	12.3%	5.3%	4	3	7	22	39	61	98	78	113	117	129	227	134	58	1090	65
2/27/2020	0.0%	0.1%	0.1%	0.0%	0.4%	2.1%	0.8%	0.7%	3.1%	8.4%	15.2%	34.3%	23.9%	10.9%	0	1	1	0	4	20	8	7	30	81	147	333	232	106	970	76
Total	0.2%	0.2%	0.3%	0.7%	1.6%	3.0%	3.6%	3.6%	6.7%	9.2%	15.2%	29.5%	18.5%	7.8%	9	7	12	28	64	121	144	143	267	367	608	1181	739	314	4004	71

Speed Data Summary

Bin #	1	2	3	4	5	6	7	8	9	10	11	12	13	14	Total
Bin Speeds	0-20	20-25	25-30	30-35	35-40	40-45	45-50	50-55	55-60	60-65	65-70	70-80	80-90	90+	
Survey Total	9	7	12	28	64	121	144	143	267	608	1181	739	314	4004	
% Total	0.2%	0.2%	0.3%	0.7%	1.6%	3.0%	3.6%	3.6%	6.7%	9.2%	15.2%	29.5%	18.5%	7.8%	100%
Accumulated %	0.2%	0.4%	0.7%	1.4%	3.0%	6.0%	9.6%	13.2%	19.9%	29.0%	44.2%	73.7%	92.2%	100%	
Inverse Accum. %	99.8%	99.6%	99.3%	98.6%	97.0%	94.0%	90.4%	86.8%	80.1%	71.0%	55.8%	26.3%	7.8%	0.0%	
Average Speed	71 KM/H														



Site notes:

Willis Point Rd between Wallace Dr and Municipal boundard

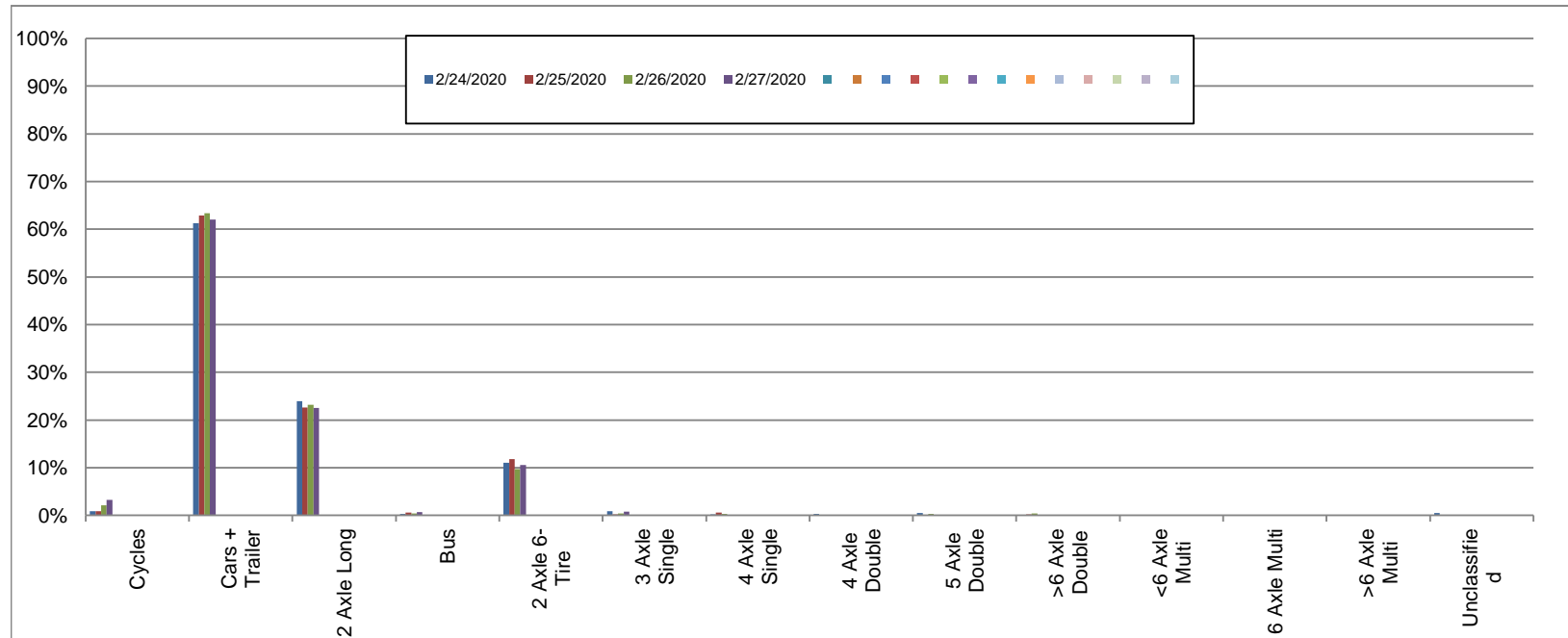
Westbound

February 24, 2020 to February 27, 2020

Daily Class Bin Percentages															Daily Class Bin Volumes															
Bin #	1	2	3	4	5	6	7	8	9	10	11	12	13	14	1	2	3	4	5	6	7	8	9	10	11	12	13	14	Total Volume	
Bin Class	Cycles	Cars + Trailer	2 Axle Long	Bus	2 Axle 6-Tire	3 Axle Single	4 Axle Single	4 Axle Double	5 Axle Double	>6 Axle Double	<6 Axle Multi	6 Axle Multi	>6 Axle Multi	Unclassified	Cycles	Cars + Trailer	2 Axle Long	Bus	2 Axle 6-Tire	3 Axle Single	4 Axle Single	4 Axle Double	5 Axle Double	>6 Axle Double	<6 Axle Multi	6 Axle Multi	>6 Axle Multi	Unclassified		
2/24/2020	0.9%	61.3%	23.9%	0.3%	11.0%	0.9%	0.2%	0.3%	0.5%	0.1%	0.0%	0.0%	0.0%	0.5%	8	572	223	3	103	8	2	3	5	1	0	0	0	0	5	933
2/25/2020	0.8%	62.9%	22.7%	0.6%	11.7%	0.2%	0.6%	0.1%	0.0%	0.2%	0.0%	0.0%	0.0%	0.1%	8	605	218	6	113	2	6	1	0	2	0	0	0	0	1	962
2/26/2020	2.1%	63.4%	23.1%	0.4%	9.7%	0.4%	0.3%	0.0%	0.3%	0.4%	0.0%	0.0%	0.0%	0.0%	23	690	252	4	106	4	3	0	3	4	0	0	0	0	0	1089
2/27/2020	3.3%	62.0%	22.5%	0.6%	10.6%	0.7%	0.1%	0.1%	0.0%	0.0%	0.0%	0.0%	0.0%	0.1%	31	587	213	6	100	7	1	1	0	0	0	0	0	0	1	947
Total	1.8%	62.4%	23.0%	0.5%	10.7%	0.5%	0.3%	0.1%	0.2%	0.2%	0.0%	0.0%	0.0%	0.2%	70	2454	906	19	422	21	12	5	8	7	0	0	0	7	3931	

Class Data Summary

Bin #	1	2	3	4	5	6	7	8	9	10	11	12	13	14	Total Volume
Bin Class	Cycles	Cars + Trailer	2 Axle Long	Bus	2 Axle 6-Tire	3 Axle Single	4 Axle Single	4 Axle Double	5 Axle Double	>6 Axle Double	<6 Axle Multi	6 Axle Multi	>6 Axle Multi	Unclassified	Total Volume
Survey Total	70	2454	906	19	422	21	12	5	8	7	0	0	0	7	3931
% Total	1.8%	62.4%	23.0%	0.5%	10.7%	0.5%	0.3%	0.1%	0.2%	0.2%	0.0%	0.0%	0.0%	0.2%	100%
Accumulated %	1.8%	64.2%	87.3%	87.7%	98.5%	99.0%	99.3%	99.4%	99.6%	99.8%	99.8%	99.8%	99.8%	100.0%	
Inv. Accum. %	98.2%	35.8%	12.7%	12.3%	1.5%	1.0%	0.7%	0.6%	0.4%	0.2%	0.2%	0.2%	0.2%	0.0%	



Classification Descriptions

Bin #	Bin Description
1	Motorcycles
2	Passenger cars, including those with recreational trailers
3	2-axle pick-ups, vans, and RVs, including those with recreational trailers
4	Buses
5	2-axle, 6-tire single units
6	3-axle single units
7	4-axle single units
8	3-axle or 4-axle double unit
9	5-axle double unit
10	6-, 7-, or 8-axle double unit
11	5-axle multiple unit
12	6-axle multiple unit
13	7-or-more-axle multiple unit
14	Vehicles that could not be classified

Site notes:

Willis Point Rd between Wallace Dr and Municipal boundard

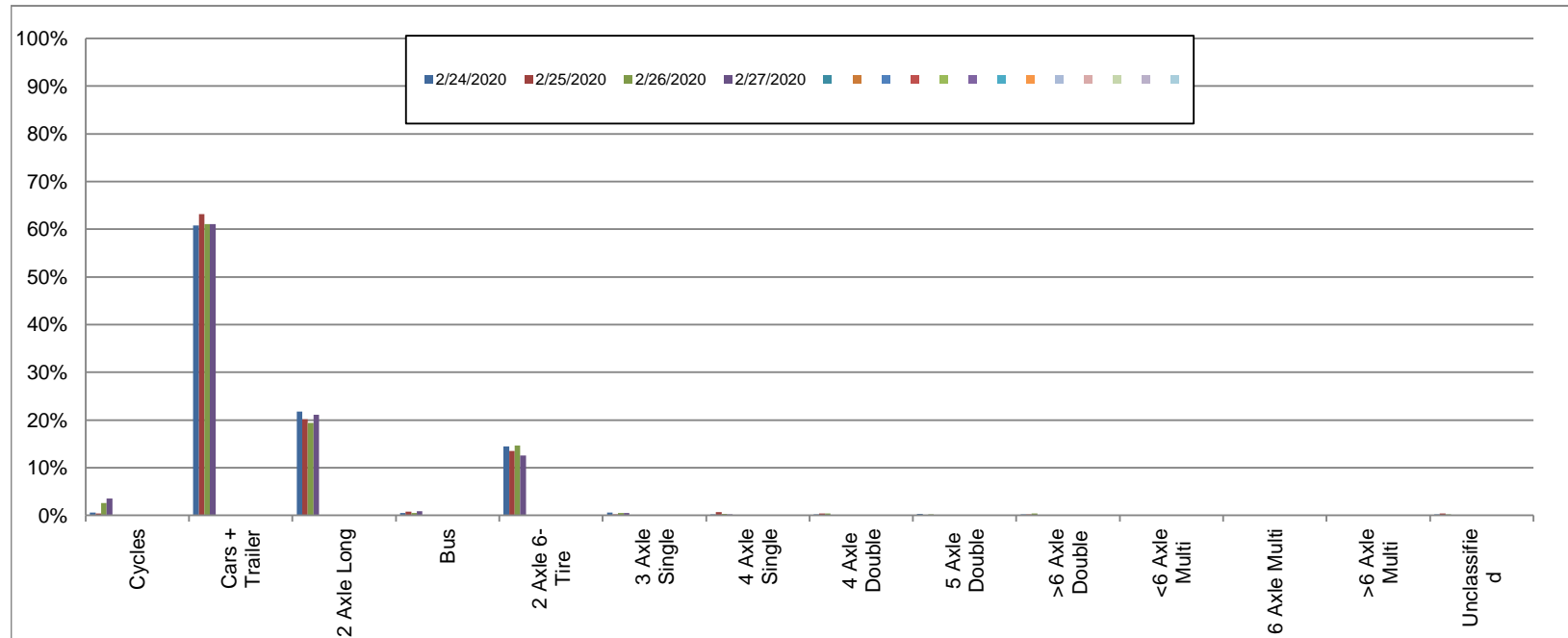
Eastbound

February 24, 2020 to February 27, 2020

Daily Class Bin Percentages															Daily Class Bin Volumes											Total Volume			
Bin #	1	2	3	4	5	6	7	8	9	10	11	12	13	14	1	2	3	4	5	6	7	8	9	10	11		12	13	14
Bin Class	Cycles	Cars + Trailer	2 Axle Long	Bus	2 Axle 6-Tire	3 Axle Single	4 Axle Single	4 Axle Double	5 Axle Double	>6 Axle Double	<6 Axle Multi	6 Axle Multi	>6 Axle Multi	Unclassified	Cycles	Cars + Trailer	2 Axle Long	Bus	2 Axle 6-Tire	3 Axle Single	4 Axle Single	4 Axle Double	5 Axle Double	>6 Axle Double	<6 Axle Multi	6 Axle Multi	>6 Axle Multi	Unclassified	
2/24/2020	0.6%	60.8%	21.8%	0.5%	14.5%	0.6%	0.2%	0.2%	0.3%	0.2%	0.0%	0.0%	0.0%	0.2%	6	580	208	5	138	6	2	2	3	2	0	0	0	2	954
2/25/2020	0.4%	63.1%	20.1%	0.8%	13.5%	0.2%	0.7%	0.4%	0.1%	0.2%	0.0%	0.0%	0.0%	0.4%	4	625	199	8	134	2	7	4	1	2	0	0	0	4	990
2/26/2020	2.6%	61.1%	19.4%	0.5%	14.7%	0.5%	0.3%	0.4%	0.2%	0.4%	0.0%	0.0%	0.0%	0.2%	28	666	211	5	160	5	3	4	2	4	0	0	0	2	1090
2/27/2020	3.5%	61.0%	21.1%	0.8%	12.6%	0.5%	0.2%	0.1%	0.0%	0.0%	0.0%	0.0%	0.0%	0.1%	34	592	205	8	122	5	2	1	0	0	0	0	0	1	970
Total	1.8%	61.5%	20.6%	0.6%	13.8%	0.4%	0.3%	0.3%	0.1%	0.2%	0.0%	0.0%	0.0%	0.2%	72	2463	823	26	554	18	14	11	6	8	0	0	0	9	4004

Class Data Summary

Bin #	1	2	3	4	5	6	7	8	9	10	11	12	13	14	Total Volume
Bin Class	Cycles	Cars + Trailer	2 Axle Long	Bus	2 Axle 6-Tire	3 Axle Single	4 Axle Single	4 Axle Double	5 Axle Double	>6 Axle Double	<6 Axle Multi	6 Axle Multi	>6 Axle Multi	Unclassified	Total Volume
Survey Total	72	2463	823	26	554	18	14	11	6	8	0	0	0	9	4004
% Total	1.8%	61.5%	20.6%	0.6%	13.8%	0.4%	0.3%	0.3%	0.1%	0.2%	0.0%	0.0%	0.0%	0.2%	100%
Accumulated %	1.8%	63.3%	83.9%	84.5%	98.4%	98.8%	99.2%	99.4%	99.6%	99.8%	99.8%	99.8%	99.8%	100.0%	
Inv. Accum. %	98.2%	36.7%	16.1%	15.5%	1.6%	1.2%	0.8%	0.6%	0.4%	0.2%	0.2%	0.2%	0.2%	0.0%	



Classification Descriptions

Bin #	Bin Description
1	Motorcycles
2	Passenger cars, including those with recreational trailers
3	2-axle pick-ups, vans, and RVs, including those with recreational trailers
4	Buses
5	2-axle, 6-tire single units
6	3-axle single units
7	4-axle single units
8	3-axle or 4-axle double unit
9	5-axle double unit
10	6-, 7-, or 8-axle double unit
11	5-axle multiple unit
12	6-axle multiple unit
13	7-or-more-axle multiple unit
14	Vehicles that could not be classified

Site notes: